

At the Doorstep of The Ross...



How to access the National Park:

Across the road from the hotel, you will see a stone wall. Stay to the right and the wall opens up. Stay to the left and you reach the golden gates entrance with Killarney House just inside.

Approximate Distances

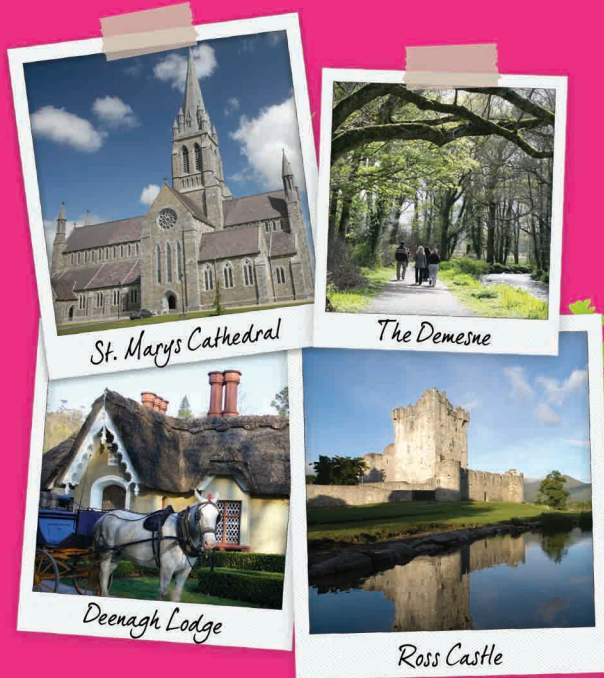
A to B - 900m	B to I - 1,400m	I to C - 1,400m
B to C - 650m	C to D - 700m	C to H - 1,050m
D to E - 1,600m	E to G - 700m	G to A - 2,400m
J to K - 4,500m		

#lovekillarney

POCKET MAP

Selected Routes for Joggers & Walkers

THE DEMENSE, KILLARNEY NATIONAL PARK

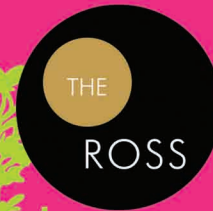


St. Marys Cathedral

The Demesne

Deenagh Lodge

Ross Castle



The Ross, Town Centre, Killarney T: 064-663 1855 info@theross.ie

www.theross.ie

