

# At the Doorstep of The Ross...



## How to access the National Park:

Across the road from the hotel, you will see a stone wall. Stay to the right and the wall opens up. Stay to the left and you reach the golden gates entrance with Killarney House just inside.

## Approximate Distances

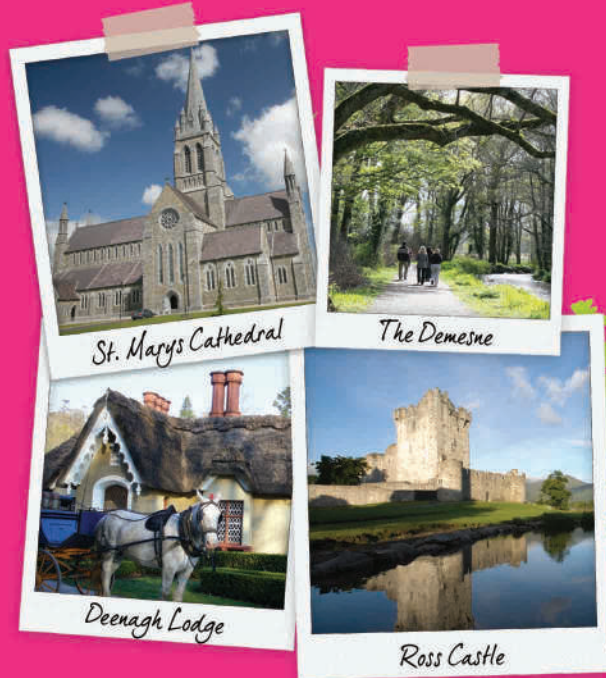
A to B - 900m	B to I - 1,400m	I to C - 1,400m
B to C - 650m	C to D - 700m	C to H - 1,050m
D to E - 1,600m	E to G - 700m	G to A - 2,400m
J to K - 4,500m		

#lovekillarney

POCKET MAP

# Selected Routes for Joggers & Walkers

THE DEMENSE, KILLARNEY NATIONAL PARK

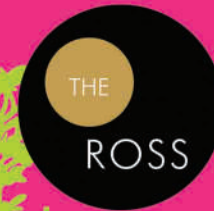


*St. Marys Cathedral*

*The Demense*

*Deenagh Lodge*

*Ross Castle*



The Ross, Town Centre, Killarney T: 064-663 1855 info@theross.ie

[www.theross.ie](http://www.theross.ie)

